

## 24" VANITY

### SPECIFICATIONS

- 5 Panel Shaker Door Design
- Comfort Height Of 34"
- Generous Interior Storage
- Adjustable Hinges
- Made In The USA

### CONSTRUCTION AND MATERIALS:

**Core Substrate:** Engineered Wood Panel

**Overlay:** High Resolution Wear Resistant Laminate & Textured PVC Edge Banding

### PRODUCT DIMENSIONS

Width: 24"

Depth: 21<sup>5</sup>/<sub>8</sub>"

Height: 34"

Weight: 47 lbs.

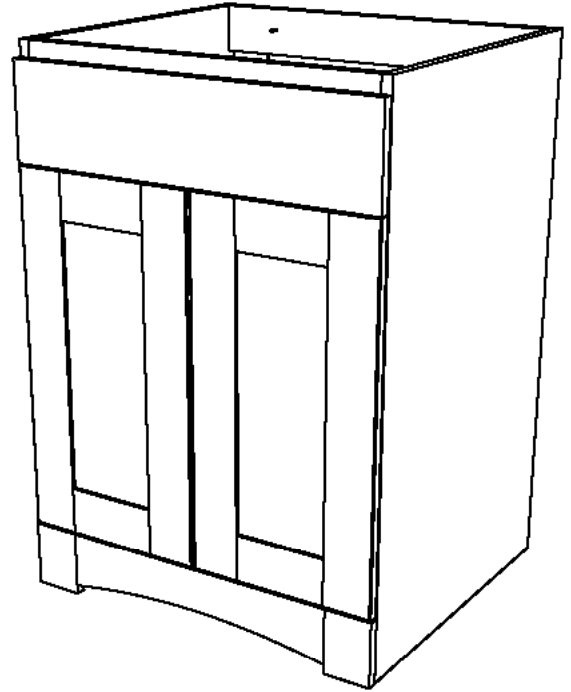
### PACKAGED DIMENSIONS

Width: 26<sup>1</sup>/<sub>4</sub>"

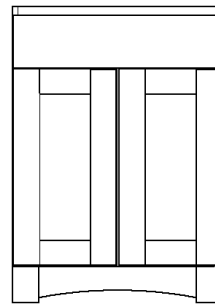
Depth: 23<sup>7</sup>/<sub>8</sub>"

Height: 36"

Weight: 51 lbs.



FRONT



SIDE

