

PLEASE READ ALL INSTRUCTIONS BEFORE ASSEMBLY.

*Unpack all parts from Styrofoam and bubble wrap inside the carton to ensure there are no missing or damaged parts. If any parts are missing or damaged, do not attempt to assemble or use the product. Please contact customer service for missing or replacement within 30 days from your purchase.

*The product is recommended for outdoor use only.

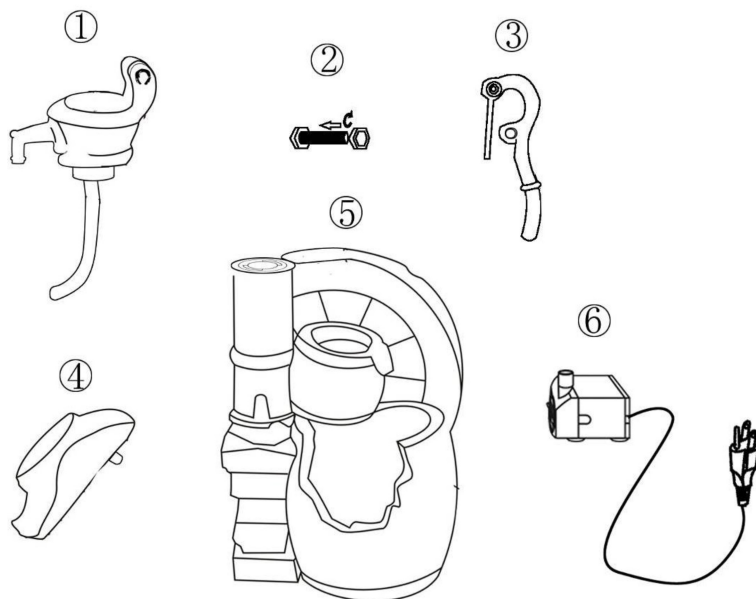
*Fully submerge pump in water prior to turning on power source and replenish with water as often as necessary.

*Save these instructions for future use.

Item Description: Water Pump and Broken Wheel Fountain

TOOLS REQUIRED FOR ASSEMBLY:

- No tools required



Warning: Before throwing away the packing materials, please make sure all parts are taken out.

CARTON CONTENTS:

	Description	Accessories standards and type	Quantity
①	Water Pump Top		1pc
②	Screw		1pc
③	Water Pump Handle		1pc
④	Hat		1pc
⑤	Fountain Bottom		1pc
⑥	Pump	PT300-70	1pc

STORAGE

When storing or wrapping fountain for the winter, allow any fountain area where water was present to dry for a few days. A period of 2-to-3 days would be preferable to make sure it dries thoroughly. Since cement is a natural material any excess water that freezes may crack the cement. We recommend using a breathable non-porous material to cover fountain. Avoid wrapping in plastic as this holds moisture inside.

ASSEMBLY INSTRUCTIONS

1. Unpack the contents of the box and check to make sure that all items are accounted for and in good condition.
2. Select a flat level surface for the assembly and final location of your fountain.
3. Place the fountain on a flat level surface. Insert water pump handle into water pump top, then insert screw through the small hole and close it tightly, but be careful not to over tighten, as this may break the handle. (refer to Fig. 1)
4. Inset the water supply tube preassembled to top into bottom, then carefully attached top to bottom. Attach pump to water supply tube, resting pump inside bottom. Next place the pump upright on the base and lead the pump power cord outward through the back opening (refer to Fig. 2).
5. Then insert the hat into water pump handle tightly. (refer to Fig. 3)
6. Fill the fountain with clean water. The maximum water level should be approximately 1.2 inch below the edge of the basin. (refer to Fig. 4)
7. Connect the pump power cord to a GFCI outlet and the product will begin to function as intended. (refer to Fig. 5)
8. Once water is added, do not move fountain, as this may damage fountain.



Fig. 1

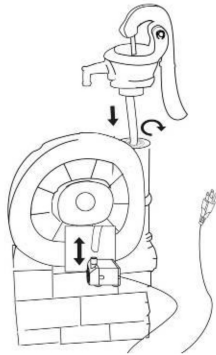


Fig. 2

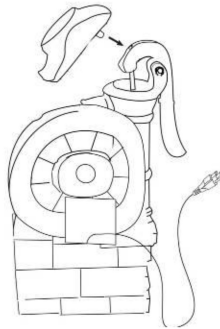


Fig. 3

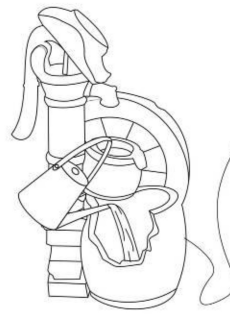


Fig. 4

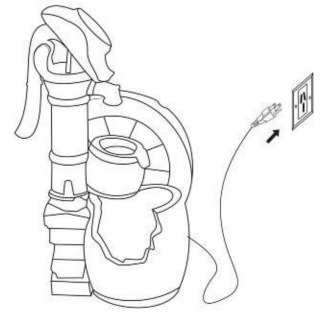


Fig. 5

NOTE:

The diagrams shown are for illustrative purposes only.

CAUTION:

- This product is NOT to be operated during freezing temperatures. When installed outdoors and in a freeze-area of the country, ensure that all water is removed and the unit is completely dry. Prior to freezing temperatures, basin should be covered to prevent rain or snow from collecting in the basin.
- Check for leaks and excessive splashing after initial installation and on a regular basis to eliminate the possibility of water damage to surrounding areas.
- Do not leave your fountain running for extended periods of time when no one is present to observe the performance.
- The fountain is not a toy. Always keep the fountain out of reach of children and pets.
- Always disconnect the pump before placing your hands in the water. Always disconnect the pump before fill water into fountain.

TROUBLESHOOTING

If the water pump fails to operate, check the following:

1. If the pump cannot pump water, check if the power is correctly connected or check if sufficient water is inside the reservoir.
 - (a) Check the pump and tubing for any form of obstructions.
 - (b) Remove the cover of the pump flow adjuster to reveal the pump impeller and gently turn the rotor to check that it is not broken or jammed.
2. If the pump runs with slow water circulating, check the following:
 - (a) The flow control on the body of the pump.
 - (b) Ensure the pump is completely submersed.
3. If any abnormal sound is heard during the pump operation, turn off the power supply and check the rotor assembly as follows:
 - (a) Remove the pump cover and **rotor** plate from the front.
 - (b) Grip the impeller and gently take out the rotor assembly from the pump.
 - (c) Rinse the motor assembly and the housing with clean water in order to remove any grit or debris.
 - (d) If any breakage of surface damage is found on the rotor assembly, please contact your supplier if a replacement needed.

We hope you continue to enjoy your water feature for many years. Over time the paint finish will gradually fade, this is part of the natural weathering process.

Ref.# WXF02692